

Sampler Quilt #4 Speedway

Instructor: Natalie Rodriguez

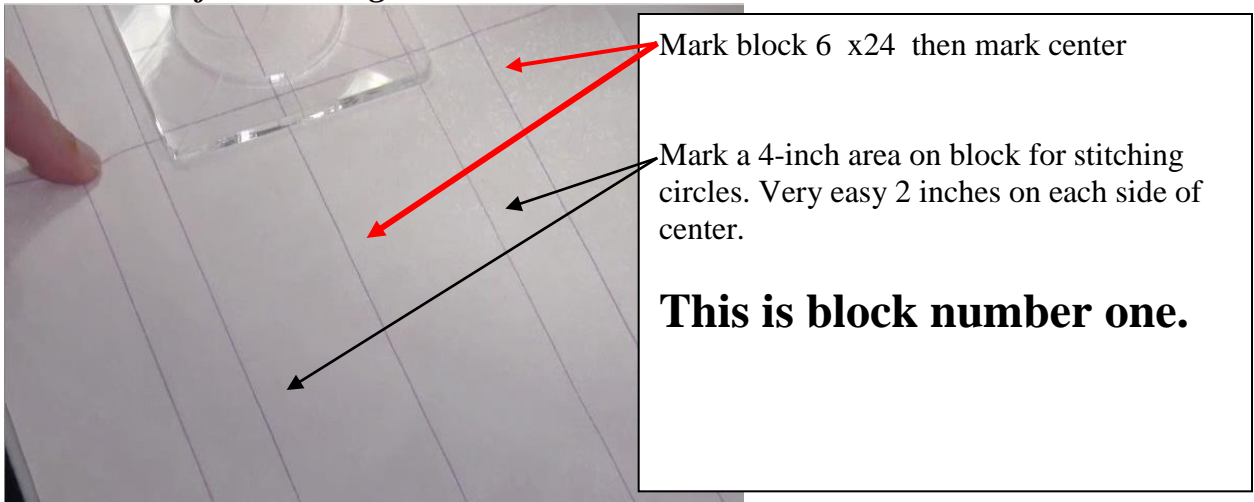
Phone: 603-8839 cell

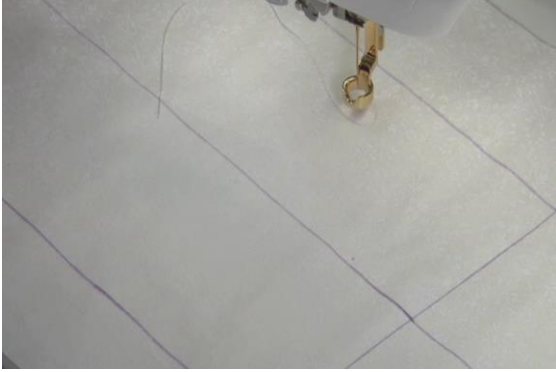
Supply List

All supplies except fabric are available at Cathey's.

- Extension table if you have one
- Sew Slip Teflon sheet if you have an extension table
- Machinger gloves (optional)
- Westalee Ruler foot for your machine and arc ruler that came with ruler
- Westalee Sampler Set #1
- 12 ½ x12 ½ Westalee Cross Hair Ruler
- Mettler Metrosene thread or Cotton/polyester quilting thread
- 80/12 Denim needle and/or 90/14 Quilting needle and/or 80/12 Topstitch needle
- Straight stitch throat plate (Optional – Gives best stitch quality)
- 4 10 x28 quilt sandwiches Block B
- Sewing machine
- **8 GB USB for class videos (not available at Cathey's)**

Instructions for Marking Fabric



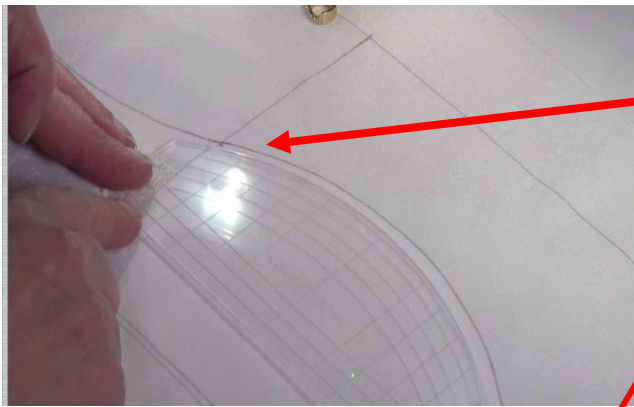


Block number two and three

Mark 6x24 with centers marked.

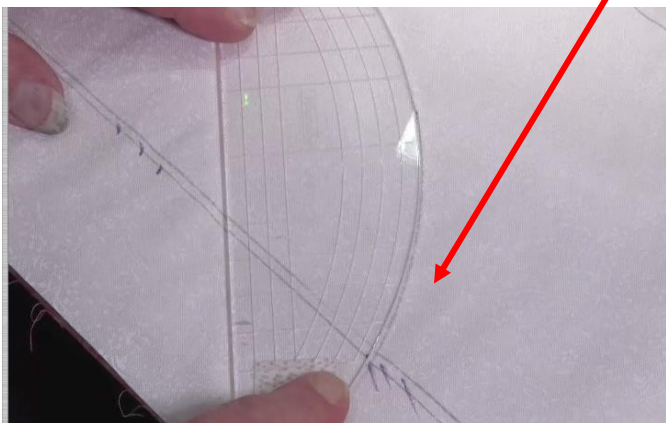


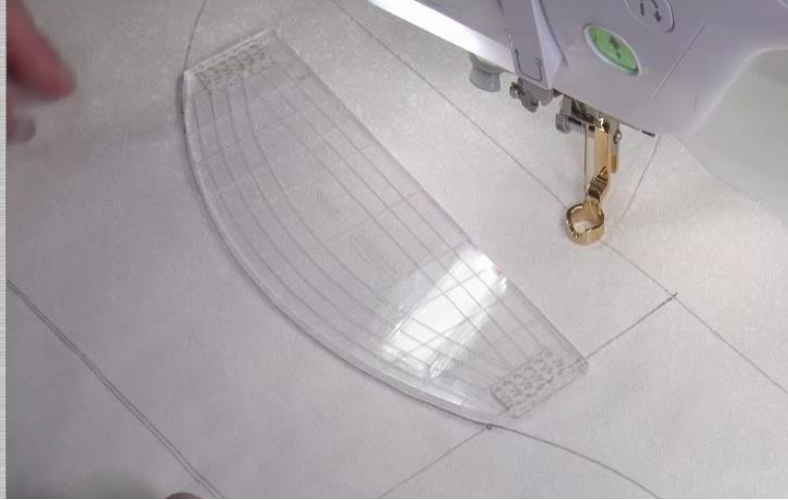
Block number 4



Put arc ruler on center line mark the curve.

When you get to the edge of the ruler you rotate the ruler and finish the curve





Flip the ruler and repeat marking going the other way.

If you have any questions, please call. I look forward to seeing you in class!
Natalie

